

design anthology

UK EDITION

INTERIORS / ART / ARCHITECTURE / TRAVEL / STYLE

UK£12 designanthologyuk.com



9 772517 694010



ISSUE 15

Palazzi Maritati e Muci - Nardò
Press review

JOURNEY / Openings

New hotels

Unique places to stay, in destinations of note



design anthology uk

48

Palazzi Maritati e Muci - Nardò
Press review

JOURNEY / Openings



Bellustar Tokyo, Japan

Sitting at a dizzying height in Shinjuku's Tokyo Kabukicho Tower, this new collection of five penthouses at Bellustar Tokyo offer a tranquil space far from the buzz of the city below. Japanese studio Keiji Ashizawa Design worked with Copenhagen-based Norm Architects, bringing their individual philosophies together to blend traditional Japanese culture with an ultra-minimalist yet warm aesthetic. A restrained colour and materials palette of dark grey, timber and brick offers a retreat from the bright lights of the city and provides a shadowy contrast to light and airy spaces dressed in neutrals and natural wood, designed to boost calm and wellbeing in the metropolis.

panpacific.com



JOURNEY / Openings

Palazzi Maritati e Muci, Italy

After being charmed by the palaces of Palazzi Maritati e Muci during a trip to the Puglian town of Nardò, French Michelin-star chef Guy Martin has reopened the historic properties as one singular intimate guest house. Italian artisans were tasked with preserving original features such as vaulted ceilings and pastel-coloured frescoes, creating a dramatic backdrop for the contemporary design

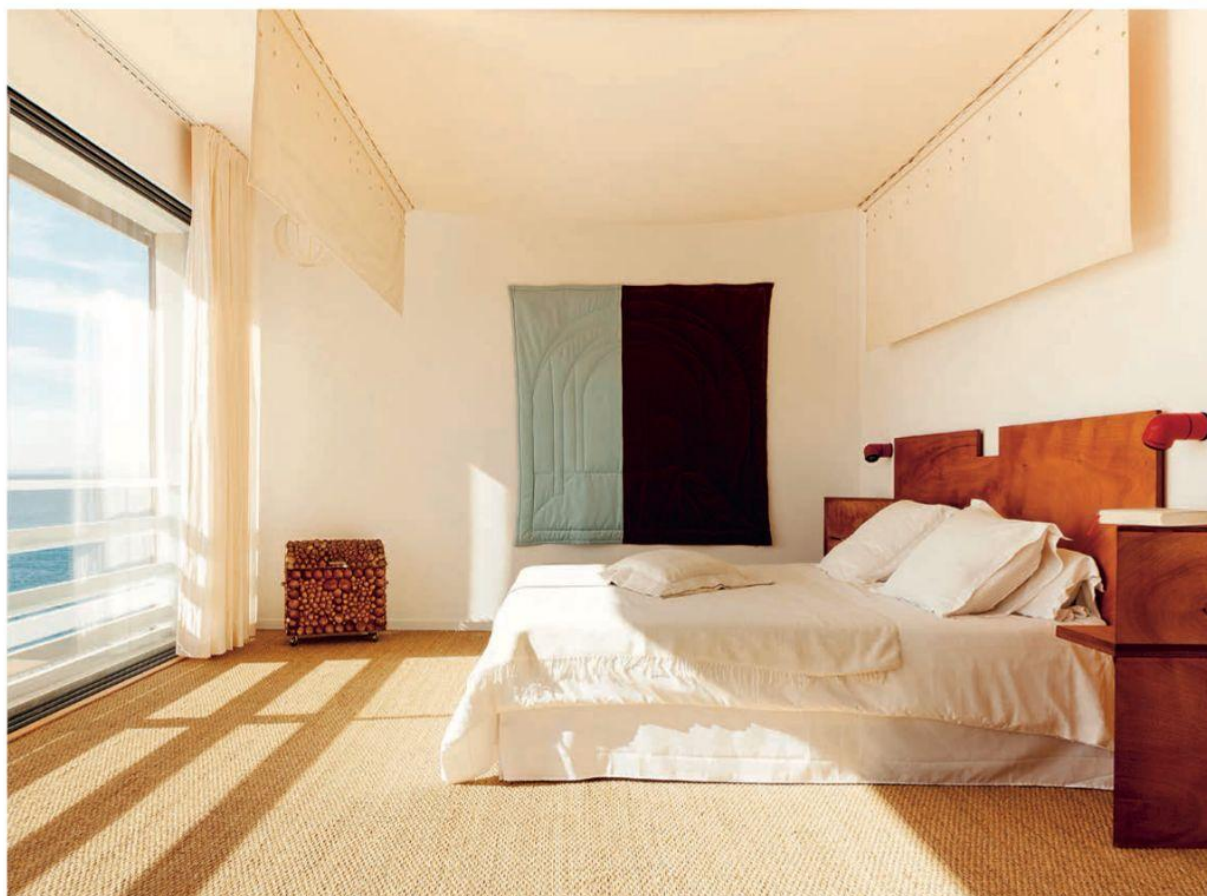
pieces curated by Martin's wife Katherina Marx and Jérôme Faillant-Dumas, former art director for Yves Saint Laurent and Pierre Bergé. The finishing touch is an eclectic mix of artworks from Martin and Marx's personal collection, ranging in style from Charles Garnier to Man Ray.

maritatiemuci.com



Michel Figuei; Edouard Sarville

JOURNEY / Openings



Tuba Club, France

Designer Marion Mailaender has returned to hip Marseille hotel Tuba Club, which first opened its doors in 2020, to transform the private apartment sitting above into three brand new suites. A simple creamy colour palette and layers of natural wood take on the golden hue of the city's sun-drenched light and frame enormous windows that look across the endless blue of the Mediterranean. Inspired by

the water beyond, Mailaender has played around with nautical references, from strings of colourful buoys to the living room's clear coffee table containing ancient clay octopus traps. Up on the new rooftop terrace, the gingham-clad armchairs are a nod to beach queen Brigitte Bardot.

tuba-club.com

JOURNEY / Openings

Le Grand Mazarin, France

Hotel group Maisons Pariente gave London-based designer Martin Brudnizki free reign to let his imagination run wild when creating its first ever city address in Paris. Inspired by Parisian literary salons, Brudnizki has created some sumptuous and flamboyant interiors that put a contemporary riff on the aristocratic style of the Grand Siècle. The rooms and suites are uniquely decorated with a winning

mish-mash of colours and furnishings – think salmon pink and sage green paired with sky blue curtains and patchwork throws – while the traditional tapestries that crown the head of each bed are juxtaposed with leopard-print-clad chairs at the foot, finished with vintage-style peplums.

legrandmazarin.com



Vincent Laroux

JOURNEY / Openings



Mr. Tripper

JOURNEY/ Openings



Cowley Manor Experimental, UK

French hospitality group Experimental and interior designer Dorothée Meilichzon have joined creative forces once again to transform this 17th-century manor house in the Cotswolds. The property was reportedly a source of inspiration for Lewis Carroll's *Alice in Wonderland* and so Meilichzon naturally looked to the classic novel when reimagining the 31 guest rooms. Maple-clad walls and a bold colour palette set the scene for grand four-poster beds, a playful mix of coloured textiles and rattan furniture and checkerboard accents. A spa, restaurant and cocktail bar provide the entertainment, or guests can lose themselves in the Wonderland of the hotel's 19th-century gardens.

cowleymanorexperimental.com



JOURNEY / Openings



Hotel Julie, Canada

An eclectic mish-mash of colour and print puts a playful spin on this former 18th-century inn turned boutique bolthole in Stratford, Ontario, two hours west of Toronto. Floral wallpapers, checkerboard tiling and jewel-coloured fabrics create a rich yet playful backdrop for the nine individually designed apartments, all of which come fully equipped with kitchens, lounge areas and luxe marble bathrooms.

Furnishings come in the form of contemporary design pieces and vintage finds – note the bespoke burl tables, creamy bouclé armchairs and 1960s velvet-clad sofa – while the king-sized beds with oversized rounded headboards and a heart-shaped bath are some of the fun final touches.

hoteljulie.com